

KillTest

Higher Quality, Better Service!



Q&A

<http://www.killtest.com>

We offer free update service for one year.

Exam : **9L0-621**

Title : Mac OS X Advanced
System Administration v10.5
Exam

Version : DEMO

1.In an environment where a server is providing services to connected clients, which statement best defines ? utilization?

- A.The total capacity of various resources, such as CPU processor cycles, RAM, bandwidth, and storage
- B.The amount of usage of various resources, such as CPU processor cycles, RAM, bandwidth, and storage
- C.The ratio of usage to capacity of various resources, such as CPU processor cycles, RAM, bandwidth, and storage
- D.The difference between usage and capacity of various resources,such as CPU processor cycles, RAM, bandwidth, and storage

Answer:C

2.In an environment in which a server is providing services to connected clients, which statement best defines ?headroom?

- A.The total capacity of various resources, such as CPU processor cycles, RAM, bandwidth, and storage
- B.The amount of usage of various resources, such as CPU processor cycles, RAM, bandwidth, and storage
- C.The ratio of usage to capacity of various resources, such as CPU processor cycles, RAM, bandwidth, and storage
- D.The difference between usage and capacity of various resources,such as CPU processor cycles, RAM, bandwidth, and storage

Answer:D

3.Review the Xserve configuration details and specifications, then answer the question below. Xserve (Early 2008): Two 3.0 GHz Quad-Core Intel Xeon processors Three 300 GB SAS Apple Drive Modules @ 15,000 rpm Eight 4 GB 800 MHz DDR2 ECC fully-buffered DIMMs (RAM) Xserve RAID card ATI Radeon X1300 Graphics with 64 MB RAM (no PCI cards) Power Consumption Thermal Output Idle CPU Max CPU+Disk Max Idle CPU Max CPU+Disk Max 300 W 395 W 409 W 1021 BTU/h 1344 BTU/h 1391 BTU/h What is the maximum number of Xserves, configured as described above, that can power up from a UPS with a maximum rating of 3000VA?

- A.4
- B.5
- C.6
- D.7

Answer:A

4.Which TWO tools can you use to determine the availability of services being provided by a Mac OS X Server v10.5 computer?

- A.iostat
- B.tcpdump
- C.netstat
- D.Server Admin
- E.Server Monitor
- F.serveradmin

Answer:D F

5.You should review the contents of which TWO folders to understand the upgrade history of a Mac OS X Server v10.5 computer?

- A./var/log/

- B./etc/swupd/
- C./var/db/swupd/
- D./Library/Receipts/
- E./System/Library/Receipts/

Answer:A D

6. Your company has a Mac OS X Server v10.5 computer.You get message: -bash: serversetup: command not found After running serversetup on a Mac OS X Server v10.5 computer. What is the most likely reason?

- A.Because you are not authenticated as the root user.
- B.Because Server Administration Tools package has not been installed.
- C.Because command has been removed from the system for security reasons.
- D.Because /System/Library/ServerSetup is not in your PATH environment variable.

Answer:D

7. Your company has a Mac OS X Server v10.5 computer. How should you understand the upgrade history of a Mac OS X Server v10.5 computer?

- A.You should check the history of installation activity in the install.log file.
- B.You should check the list of applied Apple updates in the swupd.plist file.
- C.You should check the list of applied Apple updates in the swupd.conf file.
- D.You should check the contents of the /Library/Receipts/ folder to determine which Apple updates have been applied.

Answer:A D

8. Your company has a Mac OS X Server v10.5 computer. How to identify the configuration file that is written to when you change a setting using a GUI tool?

- A.You should use command-line tool ps
- B.You should use command-line tool otool
- C.You should use command-line tool netstat
- D.You should use command-line tool fs_usage

Answer:D

9. Your company has a Mac OS X Server v10.5 computer. What should you do to enable IP failover in Mac OS X Server v10.5?

- A.You should type `sysctl -w net.inet.ip.redirect = 1` and press Return in Terminal.
- B.You should type `sudo serveradmin settings network:ipFailover = YES` and press Return in Terminal.
- C.You should select Network Management Server under the General tab of the Settings pane in Server Admin.
- D.You should use a text editor to add the appropriate failover commands to the `/etc/hostconfig` file on the primary and secondary servers.

Answer:D

10. Your company has a Mac OS X Server v10.5 computer. What should you do to enhance the security of the root account on a default installation of Mac OS X Server v10.5?

- A.You should remove the root password from the System keychain in Keychain Access.
- B.You should select the root user and set the value of the AccountState key to "Inactive" in the Inspector pane in Workgroup Manager.
- C.You should choose Enable Root User, then choose Change Root Password, and set a robust password from the Edit menu in Directory Utility.

D.You should enter the command: `dsenableroot -d`, then authenticate with your user name and password at each of the prompts in Terminal.

Answer:D

11. Your company has a Mac OS X Server v10.5 computer. This computer receives a signal from the connected UPS device that the computer is now running on battery power due to loss of electrical power. How does the operating system respond?

- A.The operating system will run the program `/var/run/upsresponder`.
- B.The operating system will execute the script `/usr/libexec/upsshutdown`.
- C.The operating system will execute the script `/etc/emond/rules/upssignal`.
- D.The operating system will load and run the job defined in `/System/Library/LaunchDaemons/com.apple.hwmond.plist`.

Answer:B

12. Your company has a Mac OS X Server v10.5 computer.Which command should you use to execute the contents of the file called "hello_world.sh" based on the following information? MyMac:bin apple\$ `ls`
 `ÿ Ñ Tã 8-rwxr??r-- 1 apple staff 31 Jul 29 13:00 hello_world.sh MyMac:bin apple$ cat`
`hello_world.sh #1 /bin/sh Echo ?hello world!? MyMac:bin apple$`

- A.hello_world.sh
- B../hello_world.sh
- C.run hello_world.sh
- D.exec hello_world.sh

Answer:B

13. Your company has a Mac OS X Server v10.5 computer. Please point out which DNS record type contains information about a machine's hardware?

- A.A
- B.AAAA
- C.CNAME
- D.HINFO

Answer:D

14. Your company has a Mac OS X Server v10.5 computer. You plan to configure a Mac OS X Server v10.5 computer to provide mail service to the Mac OS X v10.5 client computers on your intranet. You want to generate and sign a certificate as a root authority, and use the certificate for the mail service. What is the correct order for every step? (1).Use the `openssl` command in Terminal to sign the key (2).Use Server Admin to import the key and to configure the mail service to use the key. (3).On the server, use the Certificate Assistant to generate the key (4).Copy the certificate onto each client and add the certificate to the client's keychain using Keychain Access.

- A.(1).(3).(2).(4)
- B.(4).(3).(2).(1)
- C.(3).(1).(2).(4)
- D.(2).(3).(1).(4)

Answer:C

15. Your company has a Mac OS X Server v10.5 computer. When you join an AirPort Extreme Base Station to the RADIUS service on a Mac OS X Server v10.5 computer, what role does the shared secret perform?

- A.The shared secret establishes a secure tunnel between the base station and the RADIUS server.

- B.Clients authenticate using the shared secret as their password to gain access to the base station.
- C.The shared secret generates a key that the base station uses to encrypt traffic between the RADIUS server and the base station.
- D.The key management system uses the shared secret as a token to establish trust between the RADIUS server and the base station.

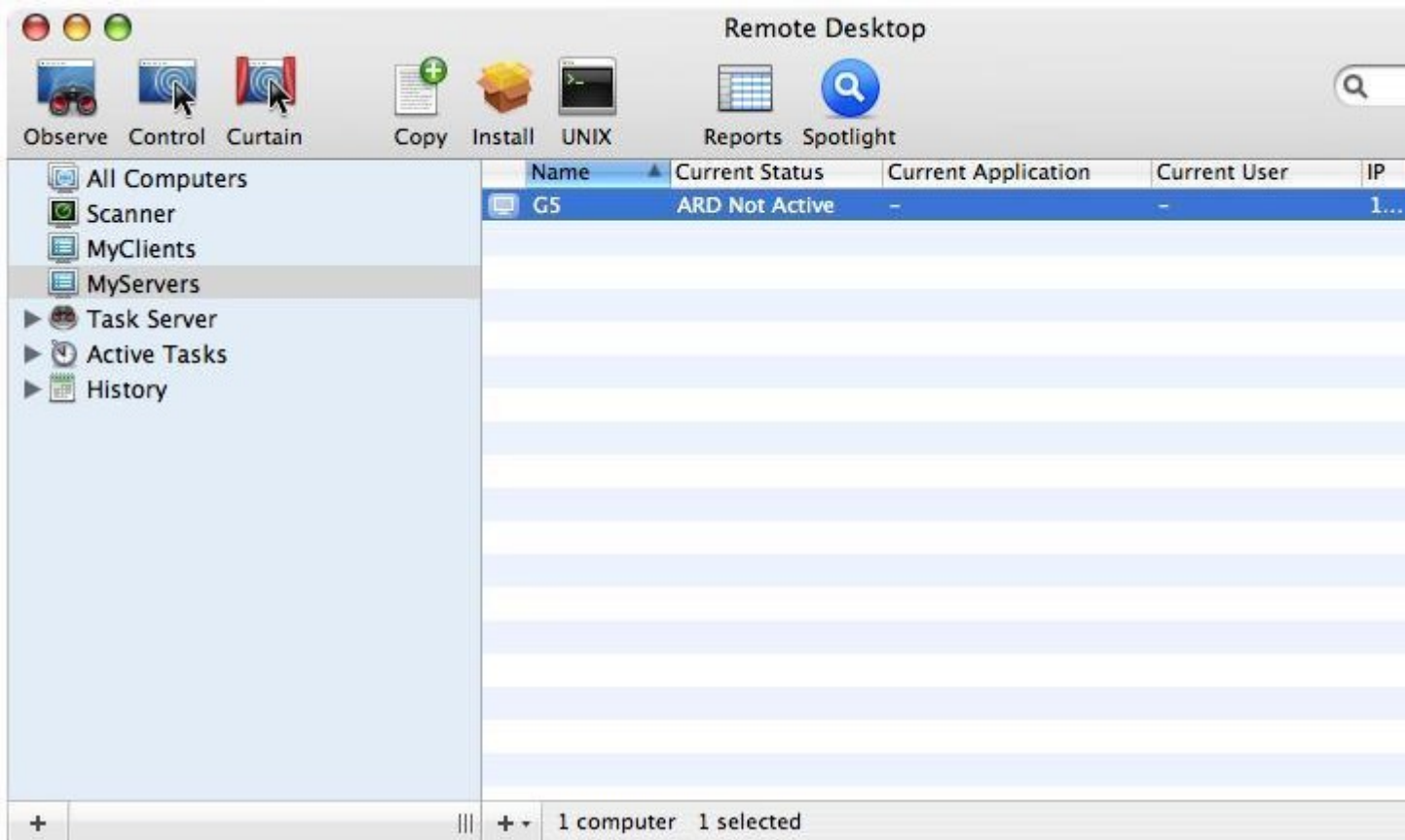
Answer:D

16. Your company has a Mac OS X Server v10.5 computer.One way to prevent unauthorized zone transfers on your primary DNS server, is to create a _____.

- A.whitelist

Answer:A

17. Your company has a Mac OS X Server v10.5 computer .You are using ARD on an admin computer at company headquarters to control a Mac OS X v10.5 computer at a remote office. Which procedure will activate the ARD agent on the remote computer?



- A.Choose Send Unix Command from the Manage menu in ARD, then add the command: kickstart -restart and click Send.
- B.Choose Change Client Settings from the Manage menu in ARD, then enable the Remote Desktop option in the Startup pane of Settings Assistant and click the Change button.
- C.In Terminal, log in to the remote computer, then type the command sudo /System/Library/CoreServices/RemoteManagement/ARDAgent.app/Contents/Resources/kickstart -activate and press Enter.
- D.In Terminal, log in to the remote computer, then type the commands cd

`/System/Library/CoreServices/RemoteManagement/ ; mv com.apple.RemoteDesktop.plist /Library/LaunchDaemons/` and press Enter.

Answer:C

18.Which of the following are the benefits of a caching-only name server?(choose two)

- A.Reduced network overhead
- B.Reduced intrusion exposure
- C.Automatic host configuration
- D.Decreased query response time

Answer:A D

19.Receipts are tokens that the Installer application looks for to determine if a package has been installed.

- A.TRUE
- B.FALSE

Answer:A

20.Receipts contain a checksum file that the Installer application reviews to determine whether a package's installation is authorized on a system.

- A.TRUE
- B.FALSE

Answer:B