

KillTest

Higher Quality, Better Service!



Q&A

<http://www.killtest.com>

We offer free update service for one year.

Exam : **HP0-M35**

Title : **Implementing HP TRIM 7.x
Software**

Version : **Demo**

1.Which HP TRIM function allows you to select the fields to "export" record metadata to a Word, Word Perfect, or tab-delimited file?

- A. TRIMPort
- B. Print Merge
- C. SuperCopy
- D. Copy

Answer: B

2.The Export function supports many different elements of information. Which objects can be exported.? (Select three.)

- A. locations
- B. record types
- C. electronic documents
- D. shortcut keys
- E. metadata
- F. document queues

Answer: A,C,E

3.Which action should you perform before importing data?

- A. update locations
- B. validate index
- C. back up datasets and document stores
- D. take dataset offline

Answer: C

4.What is the difference between the Check Out and Edit functions in HP TRIM?

- A. Check Out shows that a document is checked out to a user and shows the check out in the Assignee field; Edit allows you to edit an electronic document.
- B. Check Out provides document revision/replacement option during Check In; Edit automatically creates a revision with no user interaction.
- C. Check Out acts as a placeholder for a document and prevents other users from viewing it if it is checked out; Edit allows you to select the application that will be used to make changes in the document.
- D. Check Out cannot be used on a document; Edit allows you to change the metadata properties of a HP TRIM record.

Answer: B

5.How do you add activities to the Workflow template?

- A. Select Tools > Add Activity.
- B. Right-click, then select Add Activity.
- C. Select Edit > New Activity.
- D. Select File > New > Activity.

Answer: B

6.For what purpose would you use the Print Report function?

- A. to produce electronic documents
- B. to generate barcode labels
- C. to print workflows
- D. to create HTML documents

Answer: B

7. When creating a new document record for HP TRIM via Windows Explorer, the user should highlight the document, right-click and select what?

- A. Send to HP TRIM
- B. New to HP TRIM
- C. Open with HP TRIM
- D. Properties for HP TRIM

Answer: A

8. Once a record is authorized for destruction, how should you change the status from Active to Destroyed in HP TRIM?

- A. Locate the record, right-click and select Properties. In the Title field, add the word Destroyed before the title.
- B. Locate the record, right-click and select Administrative Tools > Retention. Click the Disposition tab and select the options to change disposition to Destroyed.
- C. Locate the record and change the Home Assignee Locations to Destroyed for the record container.
- D. Locate the record, right-click and select Record Type. Click on the record type that holds Destroyed records, and then click OK.

Answer: B

9 HOTSPOT

Click the Task button. Click on the menu option you should select to administer a SharePoint document in HP TRIM, while allowing users to edit and use this document within SharePoint.

Point and click.

Click on the menu option you should select to administer a SharePoint document in HP TRIM, while allowing users to edit and use this document in SharePoint.

The screenshot shows the 'Library Tools' ribbon in a SharePoint document library. The 'Library' tab is active. The 'HP TRIM' dropdown menu is open, displaying several options for managing documents with HP TRIM. The document 'Master Project Plan 0.2' is selected in the list below.

Type	Name
Document	Business Requirements
Document	Conceptual Design
Document	Deployment Plan
Document	Development Plan
Document	Master Project Plan 0.2
Document	Microsoft Support Plan
Document	Migration Plan
Document	Operations Requirements
Document	Test Plan
Document	User Requirements

Library Tools

Documents Library

Open & Check Out: Edit Document, Check Out, Check In, Discard Check Out

View Properties, Edit Properties

HP TRIM

Version History, Document Permissions, Delete Document, E-mail a Link

Manage with HP TRIM
Manage selected item(s) using HP TRIM.

Finalize
Finalize selected item(s) in HP TRIM.

Relocate to HP TRIM
Relocate selected item(s) to HP TRIM.

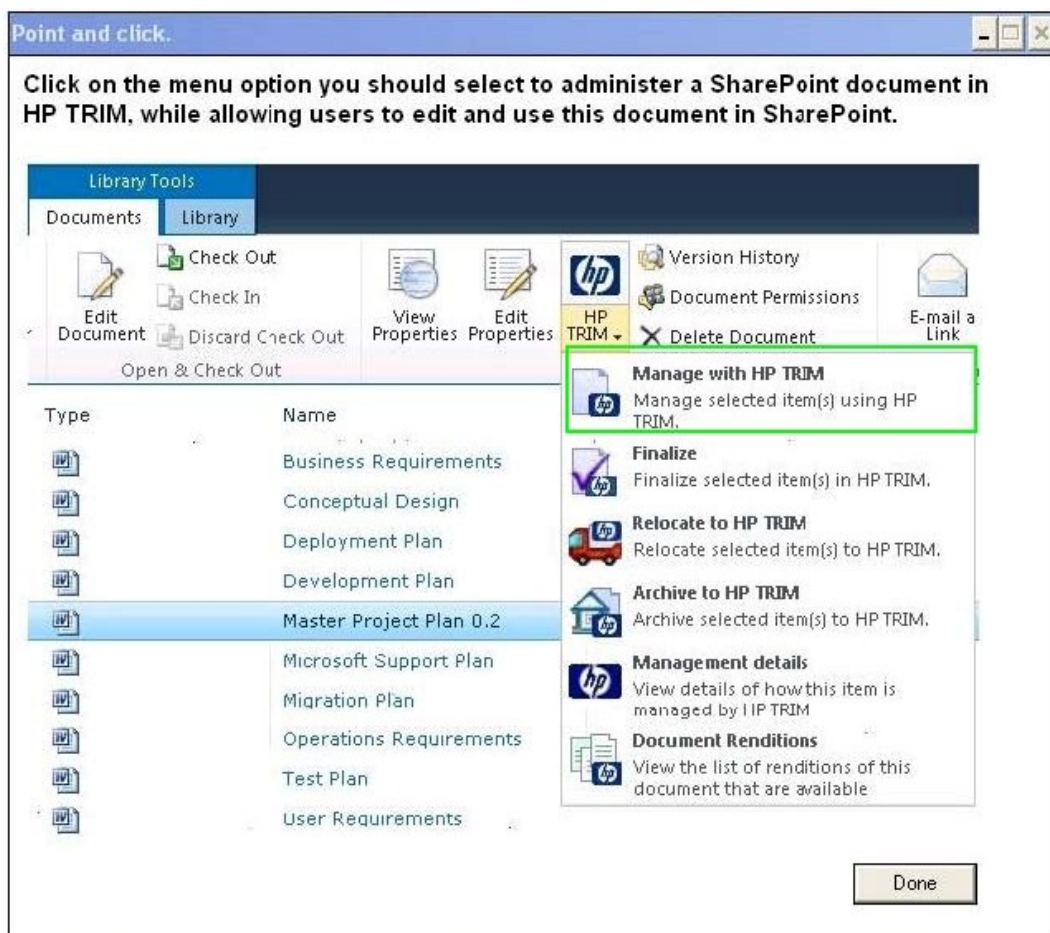
Archive to HP TRIM
Archive selected item(s) to HP TRIM.

Management details
View details of how this item is managed by HP TRIM

Document Renditions
View the list of renditions of this document that are available

Done

Answer:



10. Users have the ability to perform a Record Request in HP TRIM, which places an electronic request in the Record Request screen, accessed by Tools > Record > Record Request. Other than manually deleting the Record Request, how is the Record Request removed from the Record Request screen?

- A. by double clicking on the Record Request to fulfill the Request
- B. by changing the record's assignee to the requestor's name
- C. by right-clicking on the record and selecting Locations > Request
- D. by changing the record's home location to the requestor's name

Answer: B