

# ***KillTest***

Higher Quality, Better Service!



## **Q&A**

<http://www.killtest.com>

We offer free update service for one year.

**Exam** : **9L0-409**

**Title** : Mac Integration Basics 10.9  
Exam

**Version** : Demo

1.Review the screenshot then answer the question below.



You try to open an application called Dead End, but you get the alert shown above. You know the application comes from a trusted source.

How can you open the Dead End application?

- A. Option-click the application.
- B. Open Security & Privacy preferences, click the Gatekeeper tab, click the Add (+) button beneath the Developers list, and enter Houdini.
- C. Control-click the application, choose Open from the shortcut menu, then click Open in the dialog that appears.
- D. Open Security & Privacy preferences, click the Gatekeeper tab, click the Add (+) button beneath the Authorized Applications list, and enter Dead End.

**Answer:** D

**Explanation:**

Reference: <http://support.apple.com/kb/HT5290>

2.SMB is also called \_\_\_\_\_.

- A. AFP
- B. VNC
- C. VPN
- D. CIFS

**Answer:** D

**Explanation:**

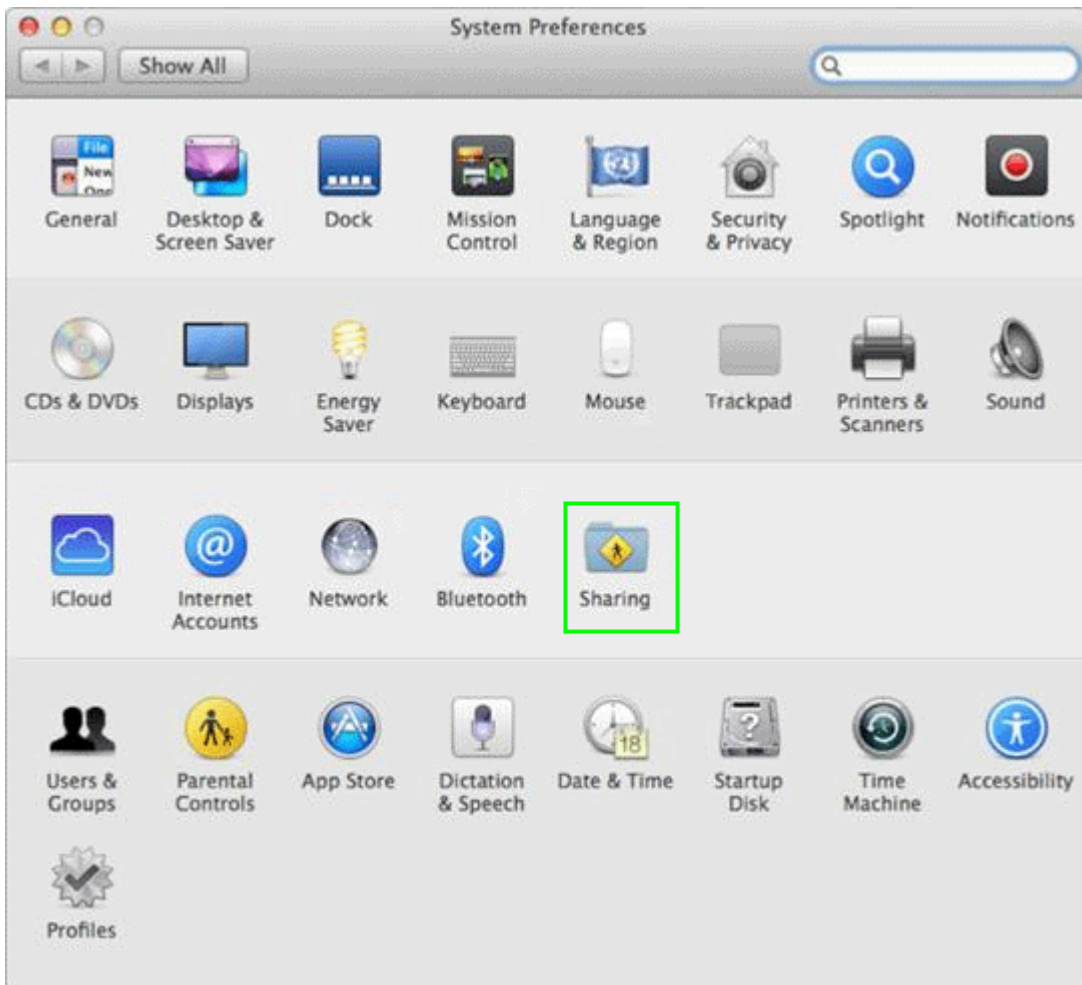
Reference: [http://en.wikipedia.org/wiki/Server\\_Message\\_Block](http://en.wikipedia.org/wiki/Server_Message_Block)

3.HOTSPOT

In the screenshot, click the icon of the preference pane where you configure your Mac so that Windows users can access files on your Mac over the network.



**Answer:**



**Explanation:**

Reference: <http://support.apple.com/kb/HT1549>

4. In OS X, the "Connect to Server" command in the Finder supports which TWO of these network file protocols?

- A. P2PP
- B. ADC
- C. AFP
- D. NCP
- E. FTP

**Answer:** C,E

**Explanation:**

Reference: <http://www.macworld.com/article/2012153/eight-ways-to-connect-to-a-server.html>

5. Which protocol CANNOT be used to print from a Mac with OS X Mavericks to a network printer?

- A. AppleTalk
- B. LPD
- C. SMB
- D. IPP
- E. HPJetDirect

**Answer: A**