

KillTest

Higher Quality, Better Service!



Q&A

<http://www.killtest.com>

We offer free update service for one year.

Exam : **4H0-002**

Title : hyperion essbase 5
certificaton

Version : DEMO

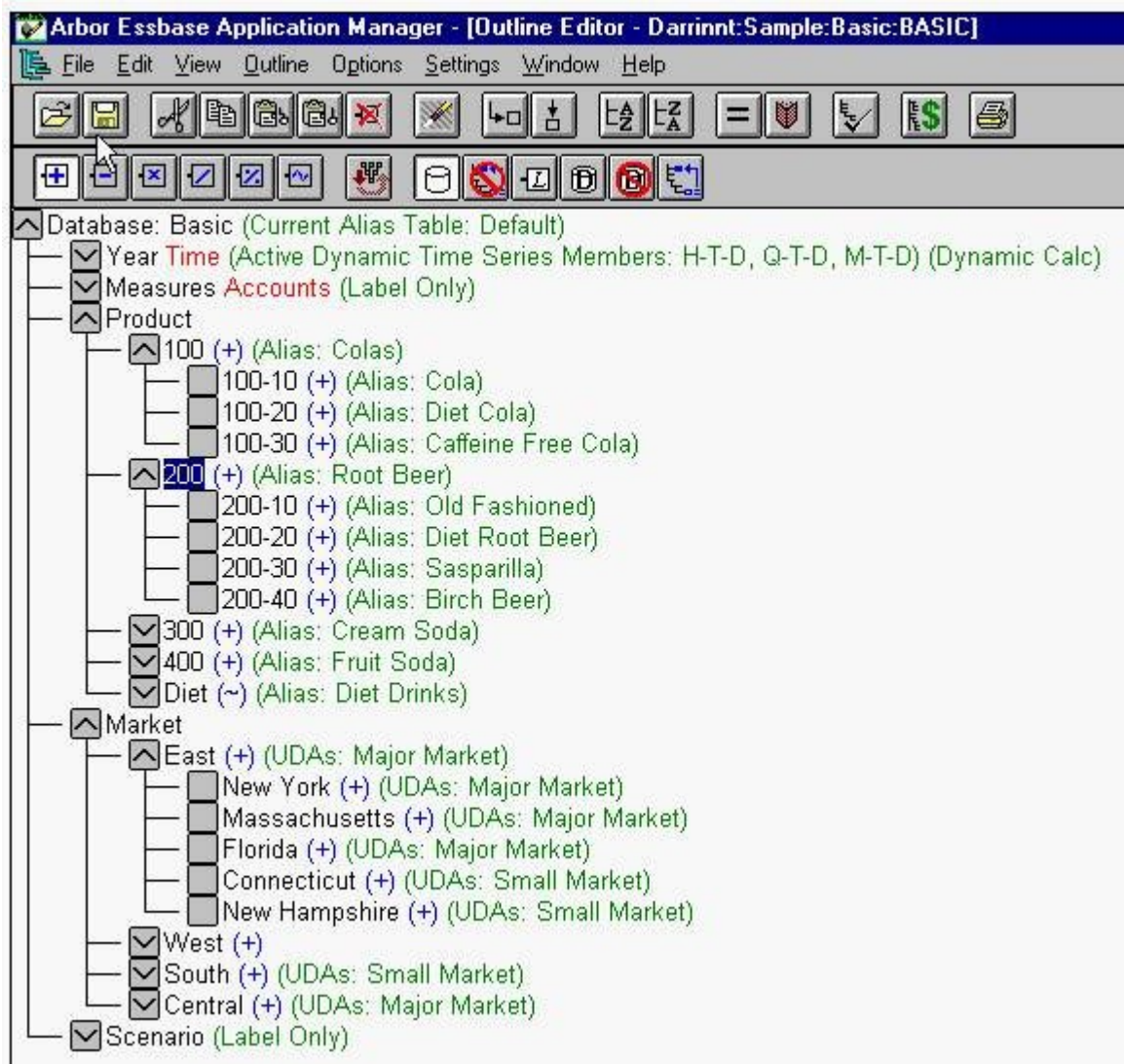
1. What is the most efficient development tool to use for rapid deployment of formatted reports without requiring coding?

- A. Essbase Objects application
- B. basic Spreadsheet Add-In with template files
- C. Essbase Web Gateway deployed over their Intranet
- D. basic Spreadsheet Add-In with template files and Extended Spreadsheet Macros

Answer: B

2. Given the Input data and the Outline in the exhibits, if Product and Market are sparse, which is an input level data block?

Microsoft Excel - Book1						
File Edit View Insert Format Tools Data Window Essbase Help						
	A	B	C	D	E	F
1			Scenario	Year	Measures	
2	New York	Cola	#Missing			
3	New York	Diet Cola	#Missing			
4	New York	Caffeine Free Cola	#Missing			
5	New York	Colas	3498			
6	New York	Old Fashioned	-2594			
7	New York	Diet Root Beer	#Missing			
8	New York	Sasparilla	#Missing			
9	New York	Birch Beer	3086			
10	New York	Root Beer	492			
11	East	Cola	11129			
12	East	Diet Cola	1114			
13	East	Caffeine Free Cola	413			
14	East	Colas	12656			
15	East	Old Fashioned	-2540			
16	East	Diet Root Beer	982			
17	East	Sasparilla	#Missing			
18	East	Birch Beer	4092			
19	East	Root Beer	2534			
20						



- A. East->Root Beer
- B. New York->Colas
- C. New York->Diet Cola
- D. New York->Root Beer

Answer: ABD

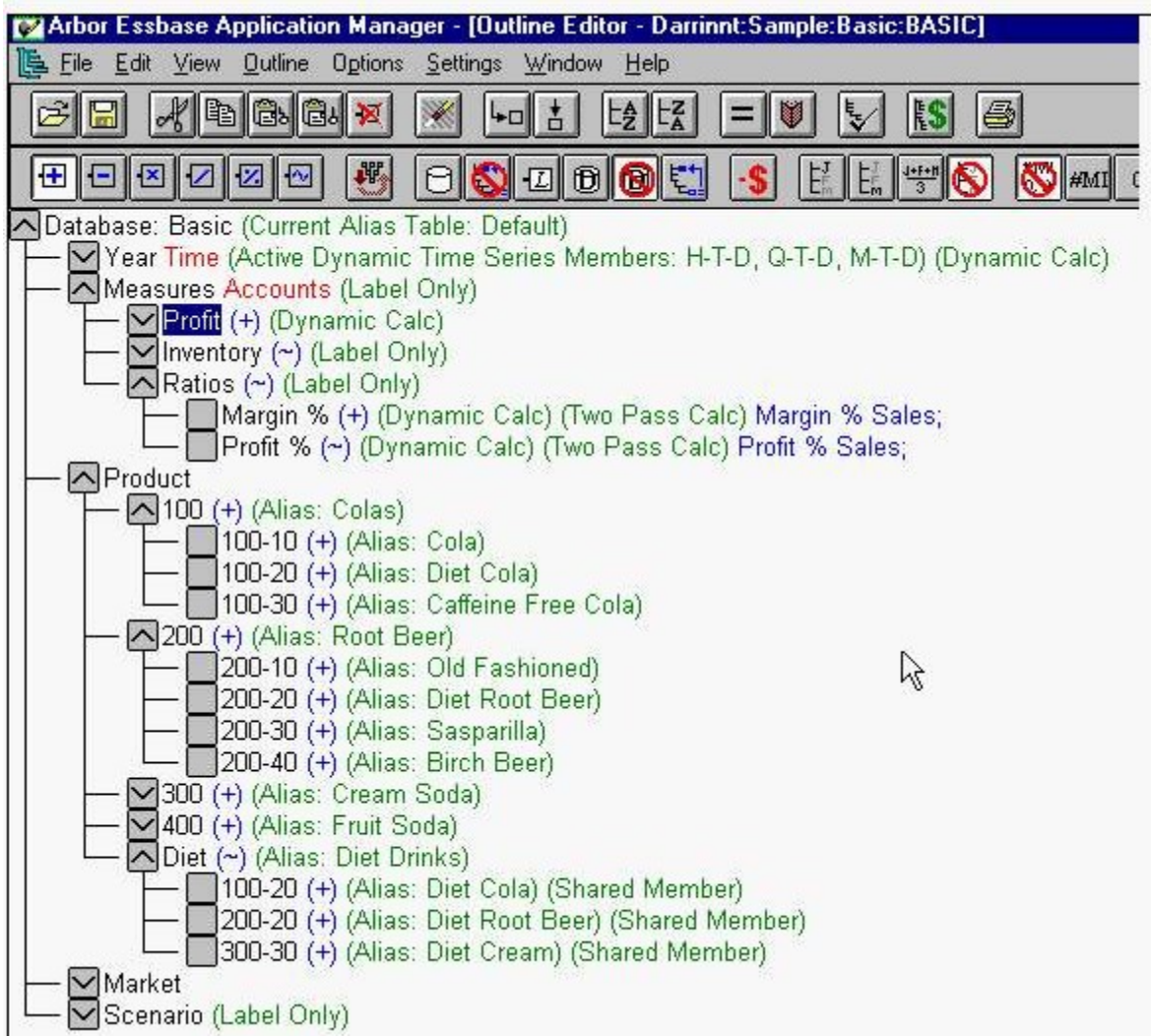
3. Given that Product and Market are the only sparse dimensions, which file(s) would be restructured if a new member were added to the Product dimension?

- A. none
- B. data files only
- C. index files only
- D. both index and data files

Answer: C

4. Given the Outline in the exhibit, if Incremental Restructuring is enabled and Product and Market are the

only sparse dimensions, what is the incremental restructuring implication if the Product dimension is moved after the Market dimension?



- A. none
- B. restructure deferred
- C. overrides incremental restructuring and restructures data files only
- D. overrides incremental restructuring and restructures index files only
- E. overrides incremental restructuring and restructures both index and data files

Answer: D

5. If the average block density is between 10% and 90% and there are few consecutive repeating values or zeros, which data compression type is recommended?

- A. RLE
- B. Bit-Map
- C. No Compression

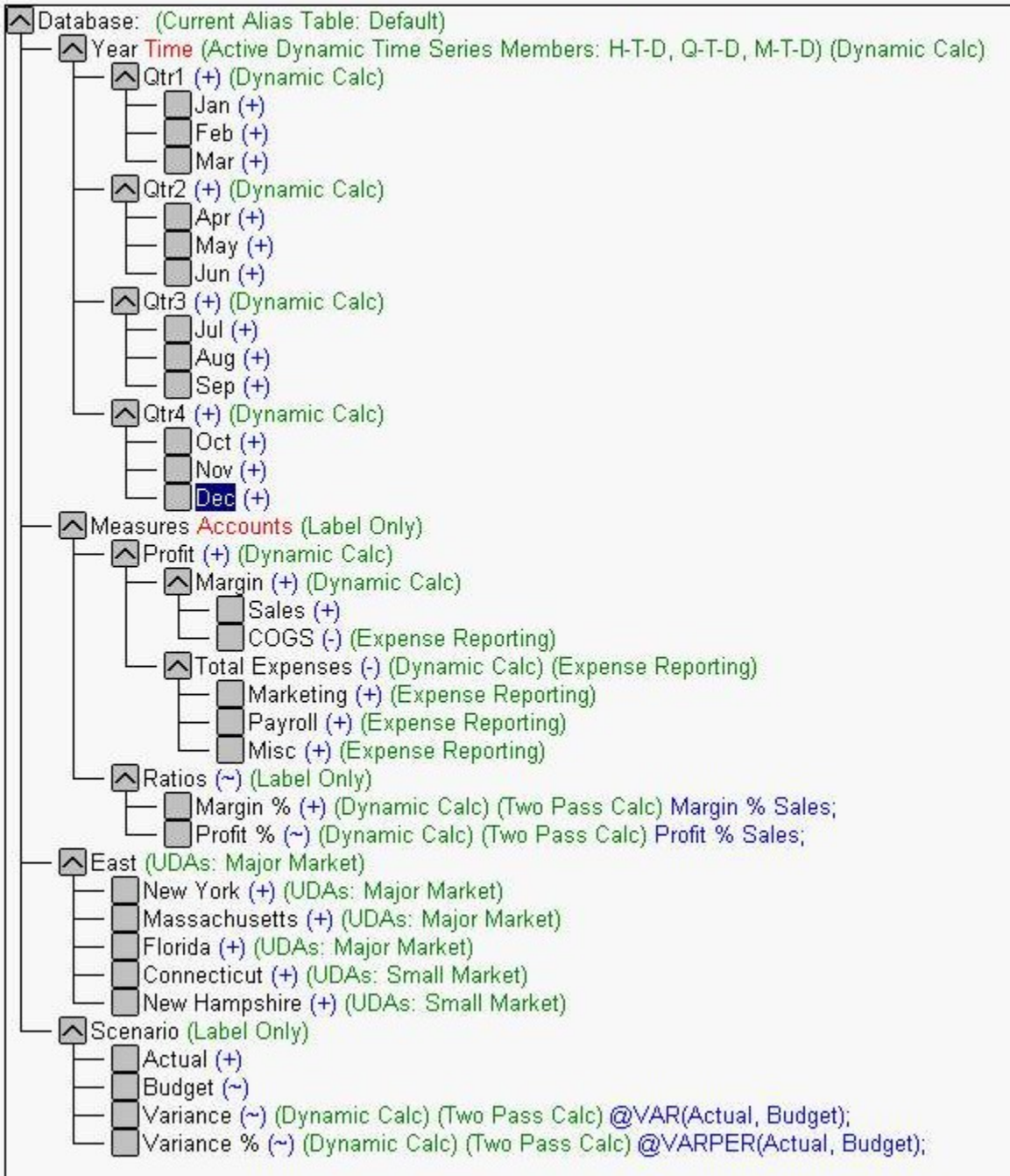
Answer: B

6. When would disabling data compression be recommended?

- A. when the average block density is very low (<3%).
- B. when the average block density is very high (>95%) and few consecutive repeating values exist.
- C. when the database contains many consecutive zero values or other consecutive repeating values.

Answer: B

7. In the Outline in the exhibit, Year and Measures are dense dimensions. Data is loaded for every Month, Measure, Market and Scenario. After a CALC ALL is run, how many blocks are there?



A. 12

B. 18

C. 24

D. 30

Answer: A

8. During calculation, what is the calculator cache used for?

A. for storing blocks

B. for tracking index page usage

C. for storing dynamically calculated values

D. for tracking calculation progress through the blocks

Answer: D

9. Given the following database statistics, what is the block size?

Dimension Name	Dense/Sparse	Number of	Number of
Members	Stored Members		
Year	Dense	20	12
Measures	Dense	16	8
Product	Sparse	22	19
Market	Sparse	25	25
Scenario	Dense	5	2

A. 192 bytes

B. 1536 bytes

C. 1600 bytes

D. 12800 bytes

Answer: B

10. If Committed Access is being used, which statements are true?

A. It retains redundant data until a transaction commits.

B. It acquires and releases Write locks as needed during the transaction.

C. It retains Write locks on all affected blocks until the transaction commits.

D. It does not restrict Read/Write access on data blocks during the transaction.

Answer: AC

11. Within Database | Statistics, what does block density indicate?

A. the actual number of blocks existing within the database

B. the average percentage of data cells within each block that contain data

C. the maximum possible number of blocks that could exist for this database

D. the percentage of blocks that exist compared to the total potential number of blocks

Answer: B

12. What would defragment defrag a fragmented database?

- A. adding a dense member to the outline
- B. adding a sparse member to the outline
- C. changing a member formula in the outline
- D. redefining a Stored dense dimension member as Dynamic Calc and Store

Answer: A

13. What would cause fragmentation in a database?

- A. deleting a dense member from the outline
- B. deleting a sparse member from the outline
- C. changing a member formula in the outline
- D. redefining a Stored dense dimension member as Dynamic Calc (Non-Store)

Answer: B

14. The stored members in the dense dimension Scenario are Actual and Budget. Database A has Actual and Budget data loaded for all products in all markets. Database B has only the Budget data loaded. Which statement is true about Database B?

- A. The index would be half as large as Database A.
- B. Half the number of blocks exist as in Database A.
- C. Block density is reduced by 50% from Database A.
- D. Fifty percent fewer blocks would fit in the Data Cache as in Database A.

Answer: C

15. If you have a production database named Sales, which files should be backed up to perform a complete system backup?

- A. sales.db
- B. sales.otn
- C. essbase.sec
- D. ess00001.ind

Answer: ACD

16. An application on a test server is ready to be put into production. The production server already has three applications. What should you do to move the application from development to production?

- A. Use the Application | Copy command.
- B. Export data from the development application.
- C. Copy the Essbase.sec file from development to production.
- D. Copy the application directories from development to production.

Answer: B

17. What does the setting NETDELAY 500 represent?

- A. the number of times the network will retry a connection before failing and reporting an error
- B. the amount of time in seconds allowed to a Named Pipes network to establish a connection to your server
- C. the amount of time in milliseconds an unsuccessful operation waits before Essbase retries the operation
- D. the number of seconds an Agent thread waits for a resource to become available so it can perform a specific action

Answer: C

18. Which file descriptions are correct?

- A. basic.otl contains the outline
- B. ess00001.ind stores data blocks
- C. basic.esm is a storage manager file
- D. basic.mdb is a partition definition file
- E. ess00001.pag stores the database index

Answer: AC

19. What occurs upon execution of DISABLELOGIN in ESSCMD?

- A. All server logins are disabled.
- B. Logins to a specific database are disabled.
- C. Logins to a specific application are disabled.
- D. It logs out any users currently on a specific database.

Answer: C

20. The BeginArchive and EndArchive commands are used for which procedure?

- A. Exporting only a partial area of a database.
- B. Backing up Essbase files while Essbase is still running.
- C. Backing up Essbase files after Essbase has been shut down.
- D. Shutting down Essbase and making a complete backup of the current database.

Answer: B