

# ***KillTest***

Higher Quality, Better Service!



## **Q&A**

<http://www.killtest.com>

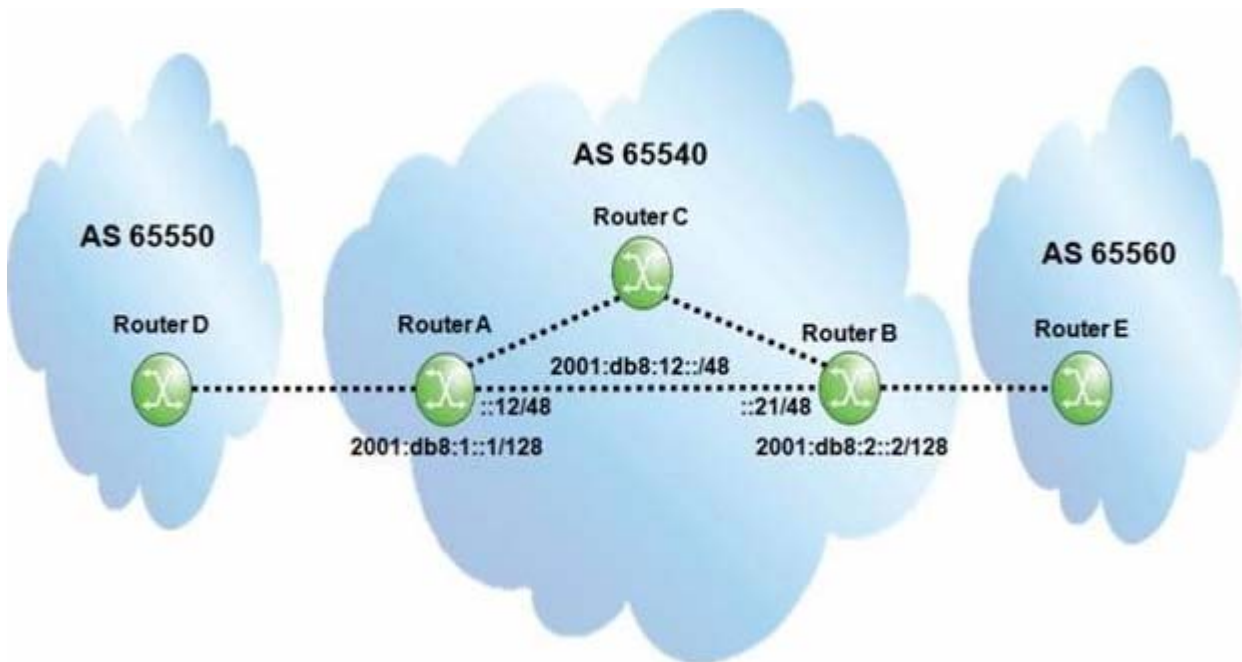
We offer free update service for one year.

**Exam** : **4A0-C02**

**Title** : **Nokia SRA Composite Exam**

**Version** : **DEMO**

1. Click the exhibit.



Assume all router-IDs are properly configured, and global IPv6 addresses are used to establish eBGP sessions.

Which of the following configurations is required on router A so that router B can exchange traffic with router D?

- A. 

```
group "IPv6_iBGP"  
family ipv6  
next-hop-self  
peer-as 65540  
neighbor 2001:DB8:2::2  
exit  
exit
```
- B. 

```
group "IPv6_iBGP"  
next-hop-self  
type internal  
peer-as 65540  
neighbor 2001:DB8:2::2  
exit  
exit
```
- C. 

```
group "IPv6_iBGP"  
family ipv6  
peer-as 65540  
neighbor 2001:DB8:2::2  
exit  
exit
```
- D. 

```
group "IPv6_iBGP"  
family ipv6  
next-hop-self  
type internal  
neighbor 2001:DB8:2::2  
exit  
exit
```

- A. Option A
- B. Option B
- C. Option C
- D. Option D

**Answer:** A

2. Based on the default settings for the Alcatel-Lucent 7750 SR, when a policy change is made and committed, what action is required by the user for the change to take effect?

- A. Execute a command to re-evaluate all routes in the Local-RIB against the configured export policies.
- B. Execute a command to re-evaluate all routes in the RIB-In against the configured import policies.
- C. Execute a command to reset the BGP session with the affected peer or peers.
- D. No further action is required.

**Answer:** D

3. An Alcatel-Lucent 7750 SR receives two updates for the same route with local preferences 200 and 300, respectively.

What local preference is sent to eBGP peers?

- A. 100
- B. 200
- C. 300
- D. None

**Answer: D**

4.Which of the following regarding route reflectors is TRUE?

- A. Only the route reflector is configured with a cluster id.
- B. There can only be one route reflector in a cluster.
- C. Clients should have iBGP sessions with each other to maintain the mesh.
- D. There can only be one level of route reflectors in the topology.

**Answer: A**

5.Which of the following statements about the BGP Advertise External feature is FALSE?

- A. It modifies the BGP advertisement logic.
- B. It improves convergence times and allows for better load sharing.
- C. It allows a router to advertise multiple external paths for a single prefix.
- D. It supports both IPv4 and IPv6.

**Answer: C**