

# ***KillTest***

Higher Quality, Better Service!



## **Q&A**

<http://www.killtest.com>

We offer free update service for one year.

**Exam** : **4A0-106**

**Title** : Nokia Virtual Private Routed  
Networks

**Version** : DEMO

1. In a VPRN, which of the following are supported as PE-CE routing methods on the Nokia 7750 SR? (Choose four).

- A. Static
- B. RIP
- C. OSPF
- D. IS-IS
- E. MP-BGP
- F. BGP

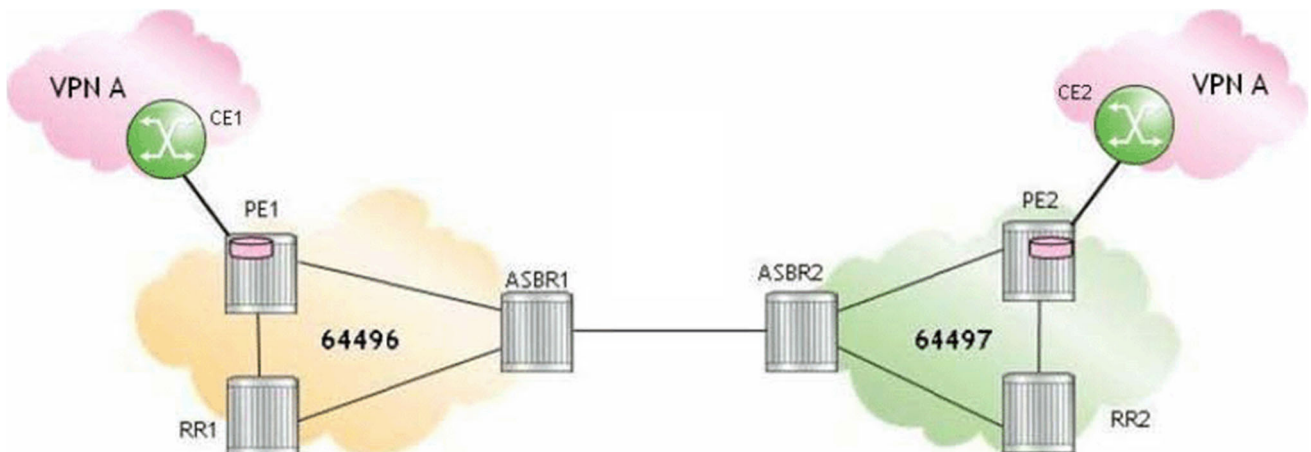
**Answer:** A,B,C,F

2. Which of the following is a characteristic of inter-AS model C VPRN?

- A. A data packet destined to a remote AS is encapsulated with three labels within the originating AS.
- B. The ASBR redistributes VPN-IPv4 updates to its ASBR eBGP peers.
- C. PE routers in different ASes exchange IPv4 routes directly between each other using eBGP.
- D. The advertising ASBR assigns a new label to the route before sending it via an MP-eBGP update to its ASBR peer.

**Answer:** A

3. Click the exhibit.



For the inter-AS model C VPRN, which of the following statements about a data packet sent from CE1 to CE2 is TRUE?

- A. PE1 sends the data packet with three labels: the bottom label is a service label, the middle label is a BGP label, and the top label is an LDP label.
- B. ASBR1 sends the data packet with one label: the BGP label.
- C. ASBR1 sends the data packet with one label: the service label.
- D. ASBR2 sends the data packet with three labels: the bottom label is a service label, the middle label is a BGP label, and the top label is an LDP label.

**Answer:** A

4. For a Carrier Supporting Carrier (CSC) VPRN where the customer carrier is a BGP/MPLS VPN Service Provider (SP), which of the following is FALSE?

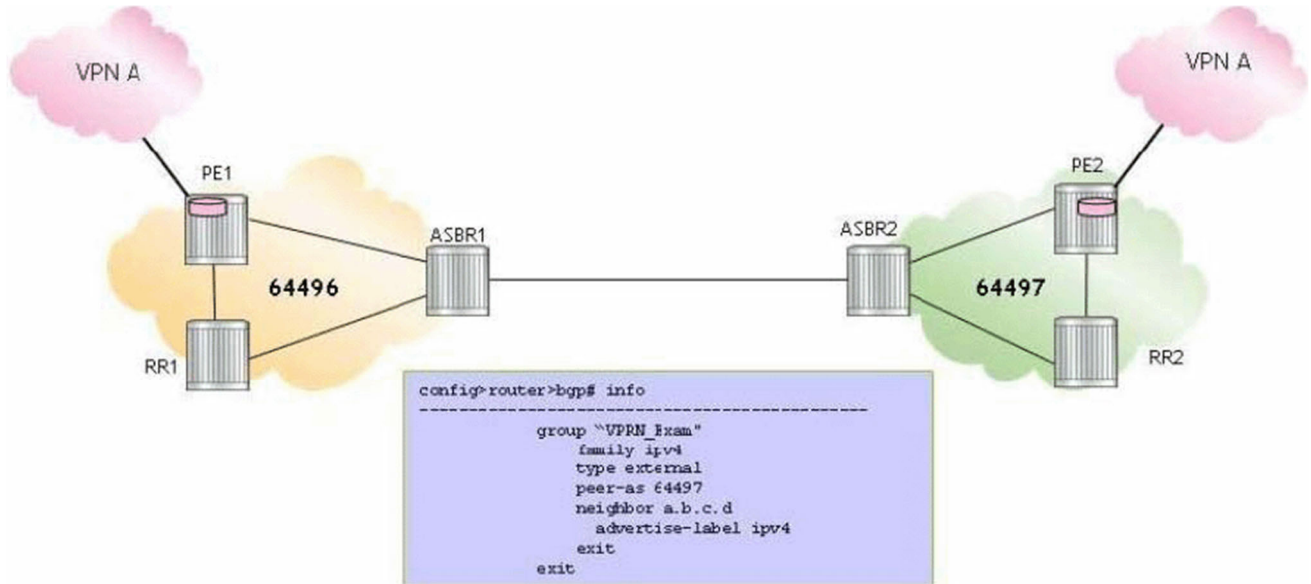
- A. The customer carrier network can be a pure IP network.
- B. The customer carrier provides Layer 2 and Layer 3 services to its end-customers.

C. A single CSC VPRN is configured on the network provider to support all services offered by the customer carrier.

D. In the case where the customer carrier offers VPRN services, the model is referred to as hierarchical VPRN.

**Answer: A**

5. Click the exhibit.



For the inter-AS model C VPRN, which router is configured as shown?

- A. PE1
- B. RR1
- C. ASBR1
- D. ASBR2

**Answer: C**