

KillTest

Higher Quality, Better Service!



Q&A

<http://www.killtest.com>

We offer free update service for one year.

Exam : **070-625**

Title : TS: Connected Home
Integrator

Version : Demo

1.You are a technical support of an international corporation which is named Wiikigo. And you are experienced at Windows vista installation, security management, and troubleshooting. In the company, your job is to recommend, implement, and troubleshoot solutions that utilize the Windows Vista Platform. There is a portable computer owned by a customer. Windows Vista and a built-in wireless network adapter are deployed in the computer. A wireless broadband router is installed by utilizing the default settings. And it is reported by the customer that the wireless signal strength from the portable computer is not consistent. The signal strength changes from poor to excellent. You have found that no consumer electronics which can interfere with the router. You need to find out why the signal strength is not consistent and solve the problem. From the following 4 options, which two actions will you choose to perform? (Choose more than one.)

- A.The wireless network adapter should be configured to utilize the 802.11g wireless mode.
- B.The wireless network adapter should be configured to utilize a Service Set Identifier (SSID) that matches the name of the network.
- C.The Connect should be selected even if the check box is not broadcasted by network.
- D.The wireless broadband router should be configured to utilize a unique Service Set Identifier (SSID).
- E.The Transmit Power setting of the wireless network adapter should be configured to Medium.

Answer:B D

2.You are a technical support of an international corporation which is named Wiikigo. And you are experienced at Windows vista installation, security management, and troubleshooting. In the company, your job is to recommend, implement, and troubleshoot solutions that utilize the Windows Vista Platform. A Windows Home Server (WHS) computer is installed for a customer. The WHS computer can be accessed from the Internet and Web Site Connectivity has been turned on. The customer should be provided with remote access on the WHS computer. Which action will you perform?

- A.Media Sharing should be enabled.
- B.The Windows Home Server Connector software should be installed.
- C.The Routing and Remote Access service should be set to Automatic and the service should be rebooted.
- D.A user account should be created for the customer.

Answer:D

3.You are a technical support of an international corporation which is named Wiikigo. And you are experienced at Windows vista installation, security management, and troubleshooting. In the company, your job is to recommend, implement, and troubleshoot solutions that utilize the Windows Vista Platform. A portable computer is owned by a customer and Windows Vista is run in the computer. There is a built-in wireless network adapter in the computer. The portable computer gain access to wireless network by utilizing a wireless broadband router. Its Service Set Identifier (SSID) broadcast of the router is deactivated. The wireless network cannot be accessed by portable computer. You need to find out why the portable computer cannot connect to the wireless network and solve the problem. What will you do? (Choose more than one)

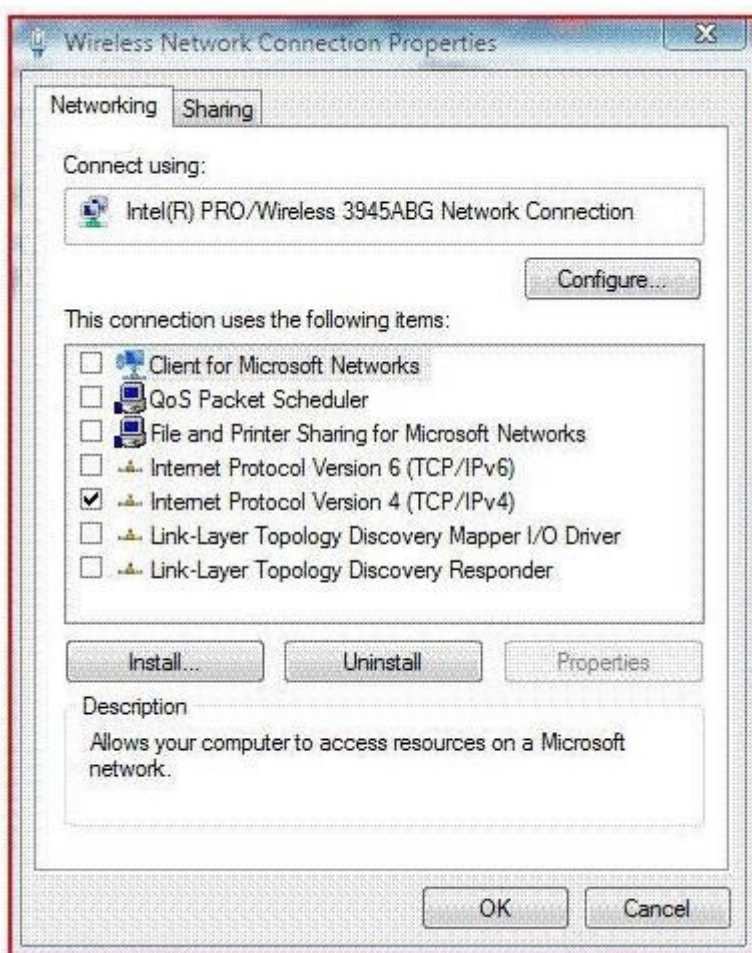
- A.The wireless network adapter should be configured by selecting the Connect even if check box is not broadcasted by the network.
- B.You should click the Manually connect to a wireless network button, and then access the network name information for the wireless network.
- C.The Dynamic Host Configuration Protocol (DHCP) client node type should be configured to the broadcast-node option.

D.The Ad Hoc Power Management option should be enabled on the wireless network adapter.

E.The wireless network adapter should be configured to utilize an ad hoc network type.

Answer:A B

4.You are a technical support of an international corporation which is named Wiikigo. And you are experienced at Windows vista installation, security management, and troubleshooting. In the company, your job is to recommend, implement, and troubleshoot solutions that utilize the Windows Vista Platform. There are five computers owned by a customer and they are connected to a home network. All the five computers run Windows Vista. Shared resources on the network can not be accessed by one of the computers. In addition, the resource of the computer cannot ne shared with other computers on the network. And Internet is available to the computer. You can see the configuration of the wireless network adapter for the computer from the exhibit listed below. Since you are the technical support of the company, you are required to make sure that the shared resources on other computers on the network should be available to the computer, and its own resources can be accessed by others computers in the network. In addition, you should set the Windows Firewall properly. What will you do to achieve the goal? (Choose more than one.)



A.To achieve the goal, the Client for Microsoft Networks check box should be selected.

B.To achieve the goal, the File and Printer Sharing for Microsoft Networks check box should be selected.

C.To achieve the goal, the Link-Layer Topology Discovery Mapper I/O Driver check box should be selected.

D.To achieve the goal, the QoS Packet Scheduler check box should be selected.

E.To achieve the goal, the Link-Layer Topology Discovery Responder check box should be selected.

Answer:A B

5.You are a technical support of an international corporation which is named Wiikigo. And you are experienced at Windows vista installation, security management, and troubleshooting. In the company, your job is to recommend, implement, and troubleshoot solutions that utilize the Windows Vista Platform. There is a Windows Vista Ultimate computer owned by you. You try to have Media Sharing enabled in Windows Media Player 11, but you fail configure the settings. You can see the media sharing from the exhibit below. Media Sharing should be enabled in Windows Media Player 11. Which action will you perform?



A.From the Network and Sharing Center, file sharing should be turned on.

B.From the Network and Sharing Center, the network connection should be modified to private.

C.The Diagnose and Repair feature should be run for the Local Area Connection.

D.In Windows Firewall, an exception should be created for Windows Media Player 11.

Answer:B