

KillTest

Higher Quality, Better Service!



Q&A

<http://www.killtest.com>

We offer free update service for one year.

Exam : **070-497**

Title : Software Testing with Visual
Studio 2012

Version : Demo

1.You are using Microsoft Visual Studio 2012. A requirement has been removed and you need to update the five corresponding test cases to reflect this by changing their state. You need to simultaneously update the state of these five test cases.

What are two possible ways to accomplish this goal? (Each correct answer presents a complete solution. Choose two.)

- A. In Team Explorer, run a query that returns the five test cases. In the Results pane, highlight all five test cases and click Refresh.
- B. In MTM, run a query that returns the five test cases. In the Results pane, highlight all five test cases and click Run.
- C. Navigate to Web Access, run the query that returns the five test cases, select the five test cases, and edit selected work items.
- D. In Microsoft Excel, open a query that returns the five test cases. Update the State field of all of the work items. Click Publish.
- E. In Team Explorer, run a query that returns the five test cases. In the Results pane, update the state and save each test case.

Answer: C, D

2.You are using Microsoft Test Manager (MTM). You are using the Microsoft Solution Framework (MSF) for Agile Software Development process template. Your team has all required permissions to run the reports on the SharePoint project portal. You need to track the progress on resolving bugs by your team for the past week.

Which Excel report should you run?

- A. Bug Trends
- B. Bugs by Assignment
- C. Run the Team Trend report.
- D. Bug Progress

Answer: A

3.You are using Microsoft Test Manager (MTM) to manage your testing efforts. You plan to use the Recommended tests feature to assist in identifying tests to run against a Windows Presentation Foundation rich client application. When you select a new build, no recommended tests are displayed. You need to configure the data collectors to enable the feature.

Which data collector should you configure?

- A. Action Log
- B. Test Impact
- C. IntelliTrace
- D. ASP.NET Client Proxy for IntelliTrace and Test Impact

Answer: B

4.You are using Microsoft Test Manager (MTM) to perform exploratory testing. You need to insert an image into the comment area for the test run.

What are two possible ways to accomplish this goal? (Each correct answer presents a complete solution. Choose two.)

- A. Use the Add screenshot tool in the exploratory test runner and drag the selection box over the area of

the screen you want to capture.

B. Capture the image you want to insert by using your favorite screen capture utility and paste the image into the comment area of the exploratory testing window.

C. Capture the image you want to insert by using your favorite screen capture utility and save the file to disk. Add the image as an attachment to the test run.

D. Capture the image you want to insert by using your favorite screen capture utility. Drag and drop the file onto the comment area from the Windows Explorer.

Answer: A, C

5.You are running a manual test using Microsoft Test Manager (MTM). You have chosen to create an action recording. You want to pause the test run and exit the test runner. Before you exit the test runner, you need to mark the test case as being in progress.

Which action should you perform in the test runner?

A. Close

B. Return to Testing Center

C. Save

D. Save and Close

Answer: B

6.You are using Microsoft Test Manager (MTM) to run an automated test suite with 240 long-running tests. In your test environment, you have set up four client machines to run these tests. You have assigned the Client role to all four machines. You need to make sure that when you run the test suite, the tests are distributed equally over all four client machines.

What should you do?

A. Add an even amount of RAM to all four machines.

B. In the Test Controller Manager view, change the distribution property for the test controller to 4.

C. In the Content view, configure the test suite to use all four environments.

D. In the Test Controller Manager view, change the Weighting property for all four test agents to 60.

Answer: D

7.DRAG DROP

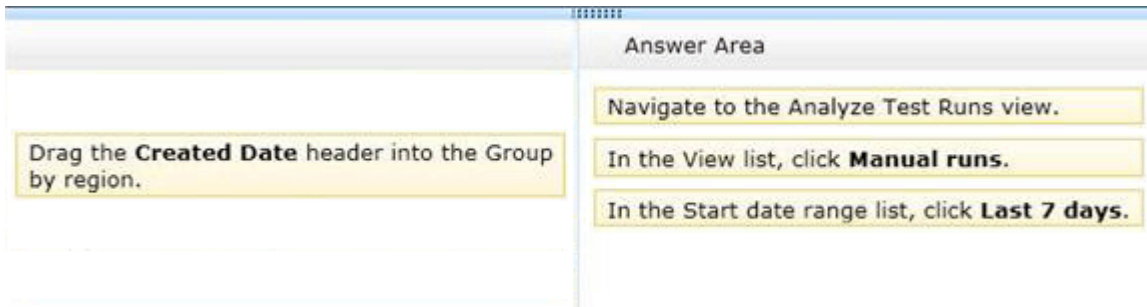
You are using Microsoft Test Manager (MTM) to manage your testing efforts. You need to produce a list of manual test runs over the past week.

What should you do? (To answer, move the three appropriate actions from the list of actions to the answer area and arrange them in the correct order.)

The screenshot shows a software interface with a header bar containing the text "Answer Area". Below the header, there is a list of four actions, each enclosed in a yellow box with a drop shadow. The actions are:

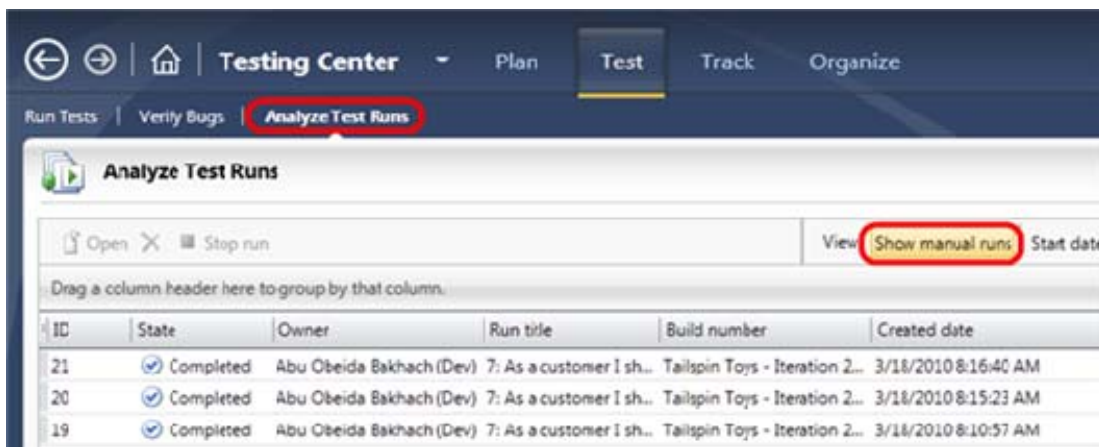
- In the View list, click **Manual runs**.
- Drag the **Created Date** header into the Group by region.
- Navigate to the Analyze Test Runs view.
- In the Start date range list, click **Last 7 days**.

Answer:



Explanation:

Select the Analyze Test Runs link and select the Show Manual Runs button to view the historical test runs for the current test plan. You may need to change the Start date range to All in order to see some test runs.



8.You are using Microsoft Test Manager (MTM). You are using the Microsoft Solution Framework (MSF) for Agile Software Development process template. Your TFS environment includes SharePoint Server 2010 Enterprise Edition and reporting integration. You need to identify the number of bugs that are open and assigned to you.

What should you do?

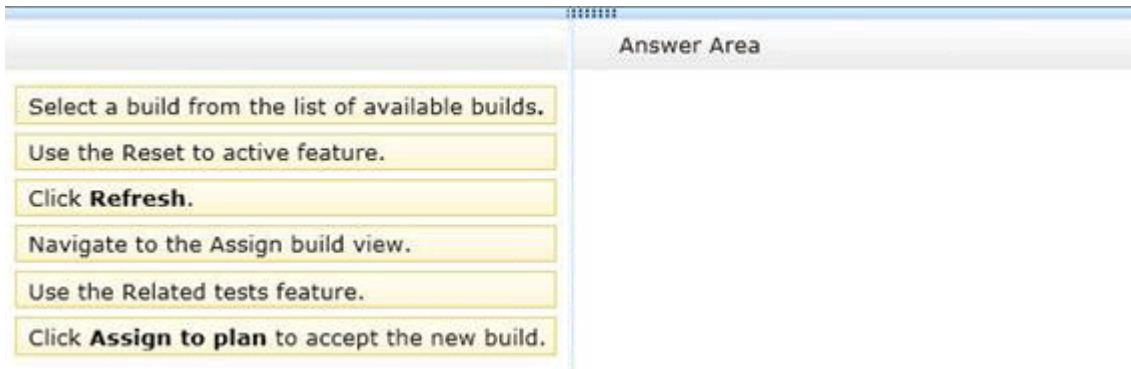
- A. Open the Track tab in MTM and click the My Assigned Bugs link.
- B. Open the Bugs Dashboard and view the Bug Progress report.
- C. Open a Visual Studio 2012 Command prompt and run the ActiveBugList.exe command, pasting in username as a parameter.
- D. Open the Bugs Dashboard and view the Active Bugs by Assignment report.

Answer: D

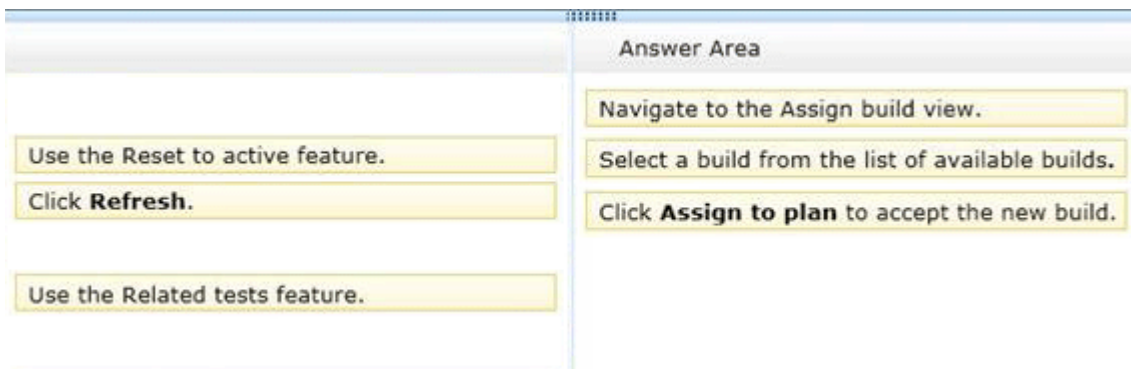
9.DRAG DROP

You are using Microsoft Test Manager (MTM) to manage your testing efforts. You want to see which work items have changed since the last time you assigned a build to the test plan. You need to assign a new build to the test plan and create a list of the bugs that have been fixed and the features that have been associated with the new build.

What should you do? (To answer, move the three appropriate actions from the list of actions to the answer area and arrange them in the correct order.)



Answer:



Explanation:

* To determine changes between builds and use a new build for testing

1. Open Microsoft Test Manager.
2. To check changes between builds, choose the down-arrow on the center group selector and then choose Testing Center.
3. In the center group menu bar, choose Track.
4. Choose Assign Build.

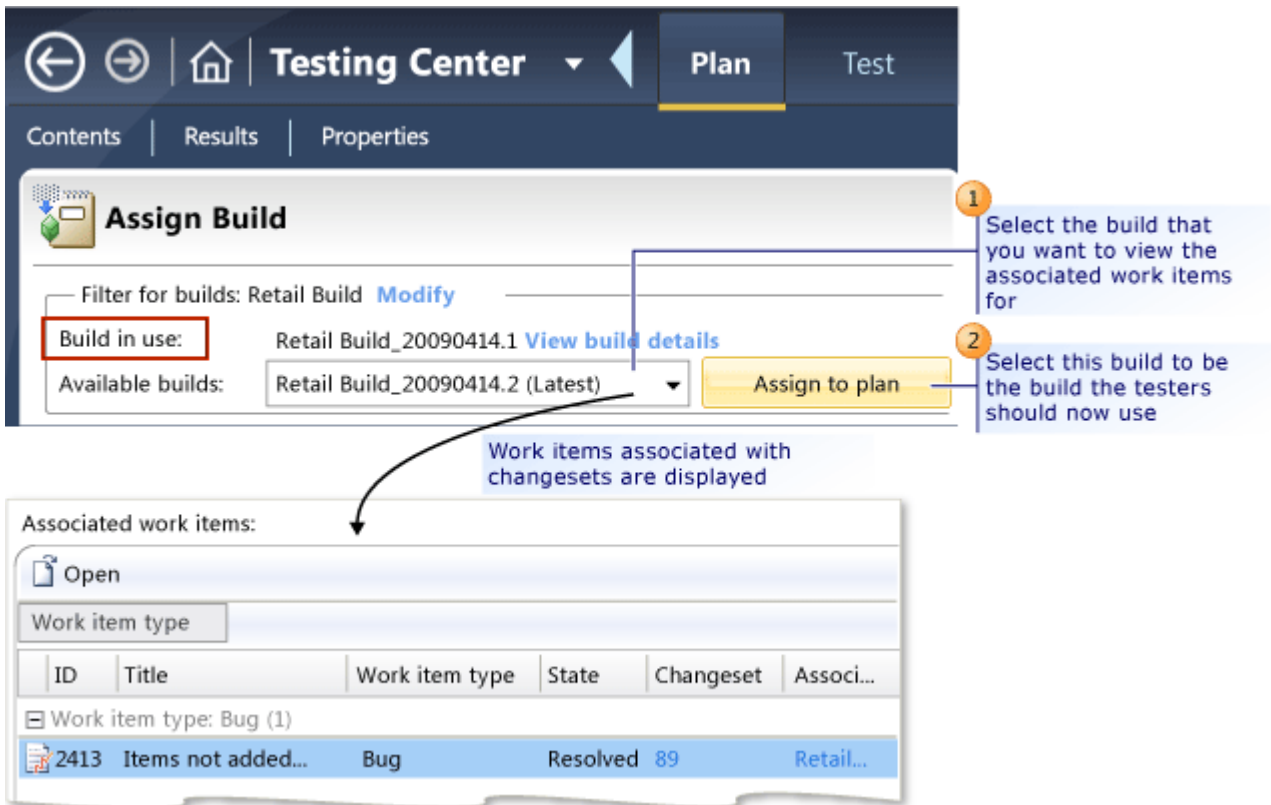
The Assign Build activity is displayed and the available builds are shown based on your build filter.

4. (Optional) To display the work items for a different build, click Available builds and select a different build.

The work items are displayed in Associated items.

5. To use a new build for your testing for this test plan, choose Available builds and select a build and then choose Assign to plan.

* After you select the build for your test plan that you are currently using, you can select a different build to see which work items have been associated with any builds between the test plan build and this selected build. Microsoft Test Manager displays the work items that have been associated with changesets checked in between any two builds, as shown in the following illustration. You can sort these work items by associated build or by the state of the work item.



10. You use Microsoft Test Manager (MTM) to manage your test environments. You plan to test an ASP.NET website on various topologies (such as one-tier, two-tier, three-tier, and n-tier) to ensure that the website supports scalability. You need to be able to deploy copies of predefined environments based on templates.

What should you do?

- A. Create a System Center Virtual Machine Manager (SCVMM) environment for each topology and store them in the library. Use the library to deploy new environments.
- B. Create new standard environments with physical machines.
- C. Create new physical environments using physical machines.
- D. Create new standard environments with machines that run under System Center Virtual Machine Manager (SCVMM).

Answer: A

11. You are using Microsoft Test Manager (MTM) to manage test cases. You want to review all test cases with shared steps. You need to build a direct links query that will generate a list of all test cases in the team project that use a shared step.

Which three actions should you perform? (Each correct answer presents part of the solution. Choose three.)

- A. Set the linked work items filter to Work item type = Shared Steps.
- B. Set the main query to Team Project = @Project AND Work Item Type = Test Case.
- C. Return all top-level work items.
- D. Return only items that have the specified links.
- E. Return only items that do not have the specified links.

Answer: A, B, D

12. You are using Microsoft Test Manager (MTM) to run manual tests. Testers reported a bug during a test run on the V1.0 build. A build for V2.0 has been created. Testers are still running tests against the V1.0 build. You need to verify that the bug has been fixed in build V2.0.

What should you do?

- A. Change the default build for the test plan to V2.0 and run the test case.
- B. Run the test case with default settings; the latest build will be selected automatically.
- C. Change the build to V2.0 by using Run with options and run the test case.
- D. Change the build property for the test case to the V2.0 build and run the test case.

Answer: C

13. DRAG DROP

You are using Microsoft Test Manager (MTM) to manage customer service bug reports. A customer has reported a problem and provided documentation of the steps to reproduce the problem. You need to use exploratory testing to create a bug and associate the bug to a new test case.

What should you do? (To answer, move the five appropriate actions from the list of actions to the answer area and arrange them in the correct order.)

	Answer Area
From the test case, use the Save and create bug option to create and associate a bug to the test case.	
Add a title and, optionally, edit the new bug.	
Start an exploratory test session and perform the steps to reproduce the bug.	
From the bug, use the Save and create test option to create the test case.	
From the exploratory test window, create a test case.	
From the exploratory test window, create a bug.	
Add a title and, optionally, edit the new test case.	

Answer:

	Answer Area
<p>From the test case, use the Save and create bug option to create and associate a bug to the test case.</p>	<p>Start an exploratory test session and perform the steps to reproduce the bug.</p>
	<p>From the exploratory test window, create a bug.</p>
	<p>Add a title and, optionally, edit the new bug.</p>
	<p>From the bug, use the Save and create test option to create the test case.</p>
	<p>Add a title and, optionally, edit the new test case.</p>
<p>From the exploratory test window, create a test case.</p>	

Explanation:

Box 1: Start an exploratory test session and perform the steps to reproduce the bug.

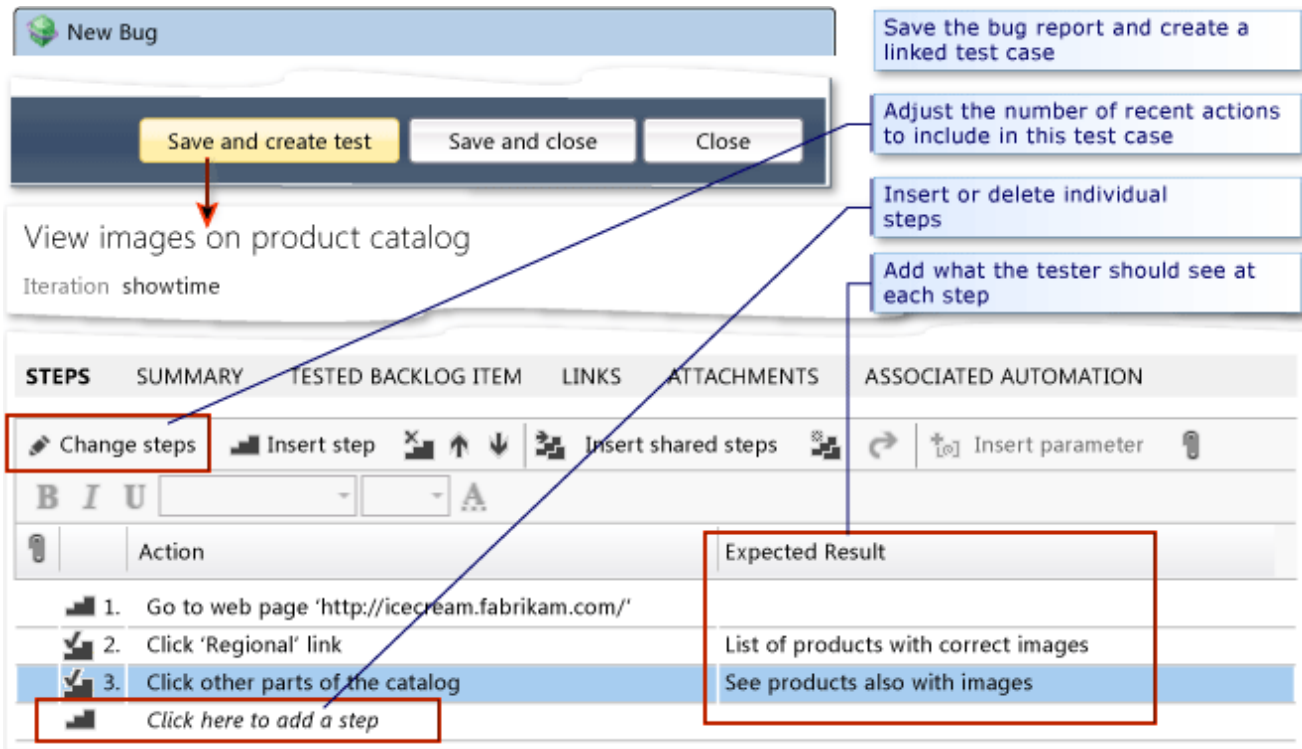
In the Exploratory Testing window, choose Start.

Run the application and explore its features. For example, open a web browser and log in to your website.

Box 2: From the exploratory test window, create a bug.

When you find flaws in the application, choose Create bug.

Box 3: Add a title, optionally, edit the new bug.



Box 4: From the bug, use the Save and create test option to create the test case.

Box 5: Add a title and, optionally, edit the new test case.

14. You are using Microsoft Test Manager (MTM). You are using the Microsoft Solution Framework (MSF) for Agile Software Development process template. SharePoint integration and reporting are enabled. You want to assess the progress of your team's testing effort.

To do this, you need to:

- Identify gaps in test coverage.
- Monitor test progress for each requirement, and.
- Identify how many test cases are passing or failing for each requirement.

What should you do?

- A. Open the test plan in MTM and look at the test plan status.
- B. From Team Explorer, open the Stories Progress report.
- C. From the team portal, open the Test Plan Progress Excel Report.
- D. From the team portal, open the User Story Test Status Excel Report.

Answer: D

15. DRAG DROP

You are using Microsoft Test Manager (MTM) to manage your testing efforts. You want to see how manual testing is going for the current plan. You need to see a list of manual test runs grouped first by Test Status and then by State.

What should you do? (To answer, move the three appropriate actions from the list of actions to the answer area and arrange them in the correct order.)

Answer Area

Drag the **State** column header into the group by region.

Navigate to the Analyze Test Runs view and select **Manual runs**.

Click the **State** column header.

Drag the **Test Status** column header into the group by region.

Click the **Test Status** column header.

Answer:

Answer Area

Navigate to the Analyze Test Runs view and select **Manual runs**.

Drag the **Test Status** column header into the group by region.

Drag the **State** column header into the group by region.

Click the **State** column header.

Click the **Test Status** column header.

Explanation:

